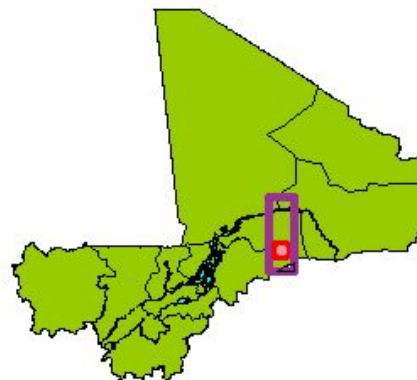
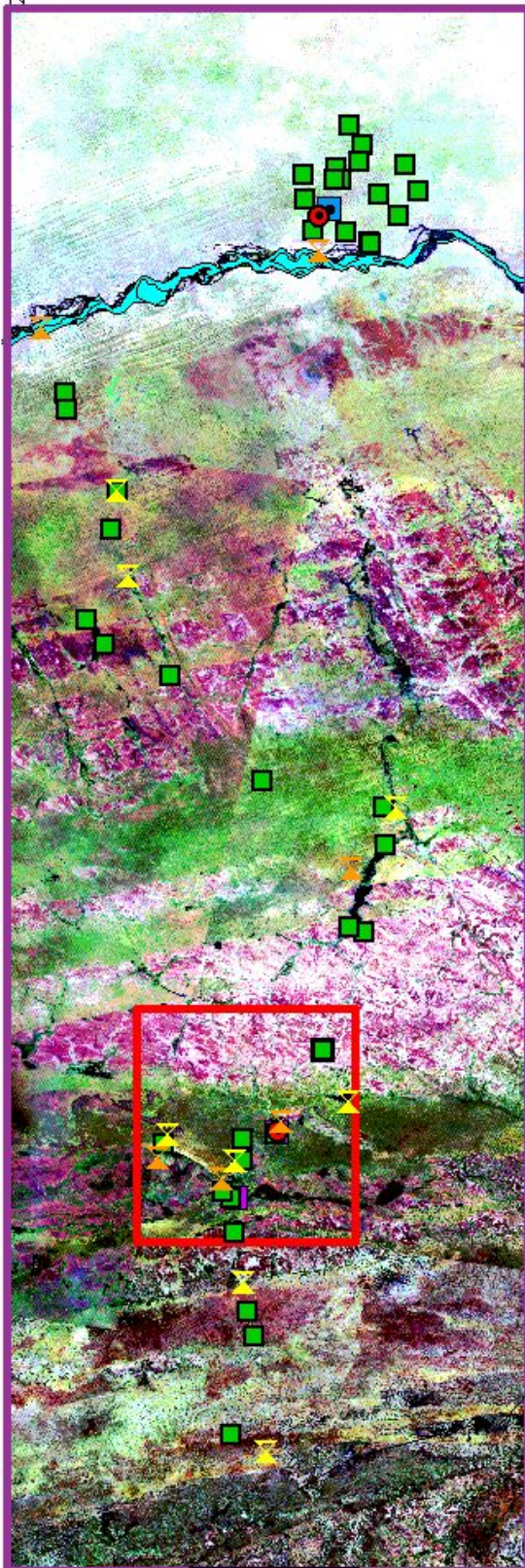


Appendix 1

Site Maps

17°30' N 2° W 1° W

Gourma mesoscale window



Legend

- Automatic rain gauge
- Rain gauge
- Automatic weather station
- Vegetation monitoring site
- CO₂ & H₂O flux station
- Heat flux station
- Hombori Super site
- Niger river valley

0 10 20 Kilometers



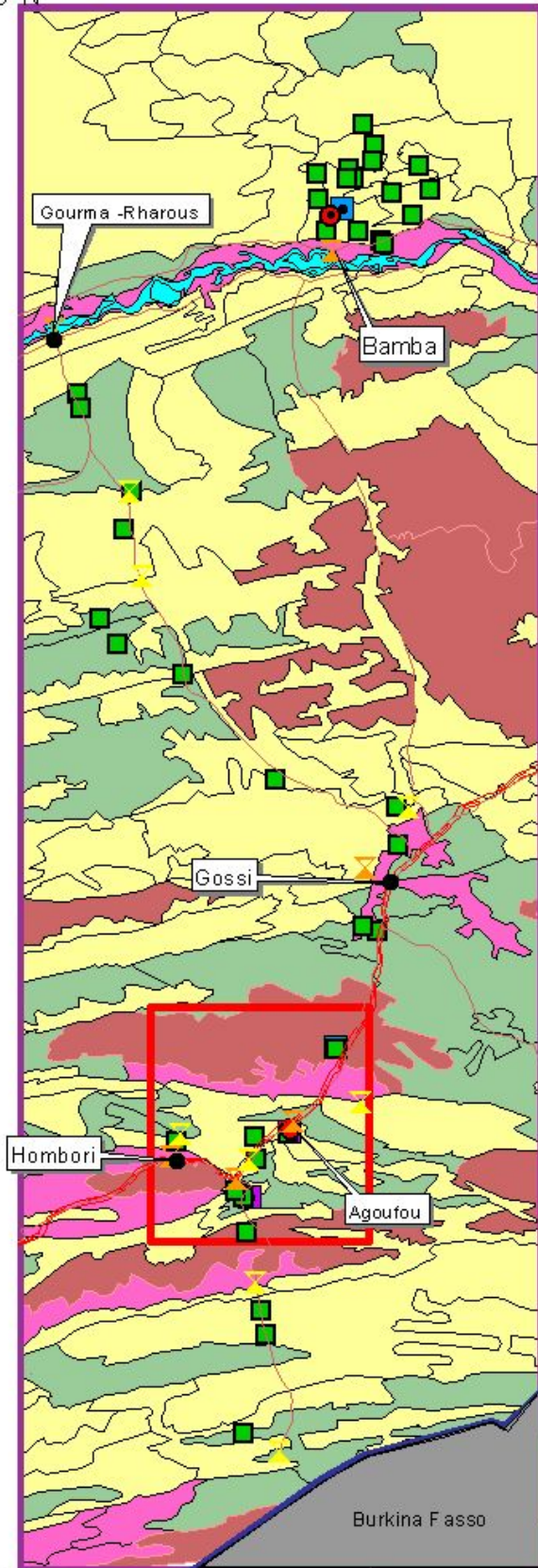
14°30' N

TM Landsat scenes september & october 1990/1999

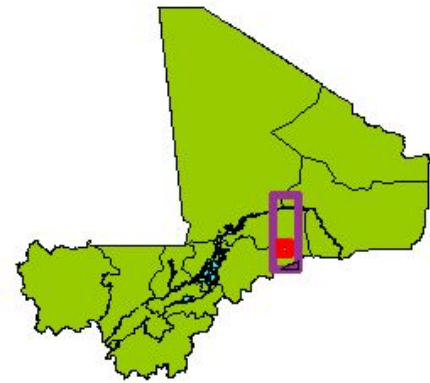
Instruments as per May 2005

Gourma mesoscale window

2° W 17°30' N 1° W



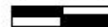
14°30' N



Legend

- Cities
- ▲ Automatic raingauge
- ⏏ Raingauge
- Automatic weather station
- Vegetation monitoring site
- CO₂ & H₂O flux station
- Heat flux station
- Dirt roads
- Tarmac roads
- Mali \ Burkina Faso border
- ▭ Hombori Super site
- Rock and Gravels
- Sandy soils
- Loamy clayed soils
- mix soils
- Niger river valley

0 10 20 Kilometers



Instruments as per May 2005

Gourma mesoscale Site (3° x 1°)



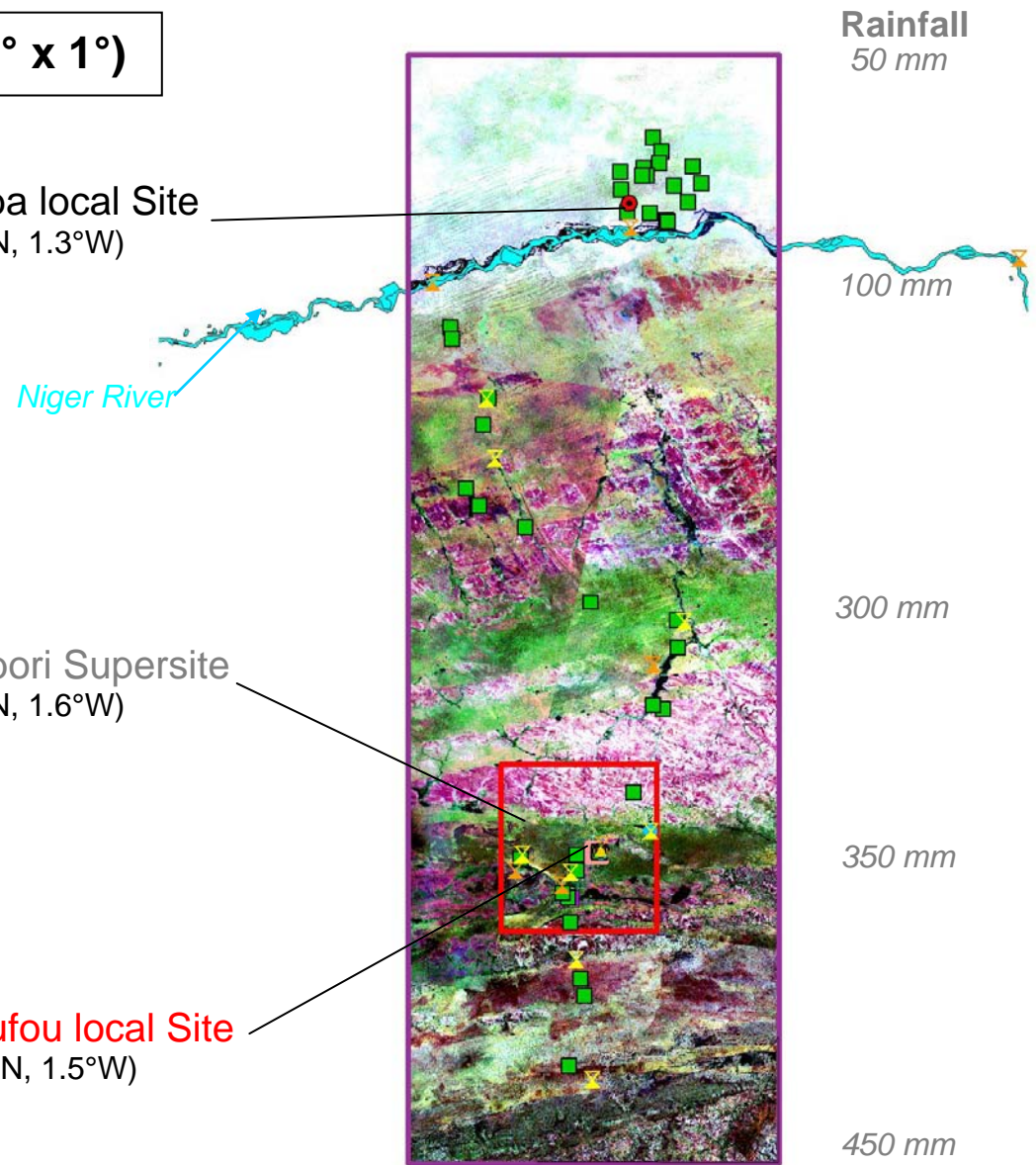
Bamba local Site
(17.1°N, 1.3°W)



Hombori Supersite
(15.4°N, 1.6°W)



Agoufou local Site
(15.3°N, 1.5°W)



Rainfall
50 mm

100 mm

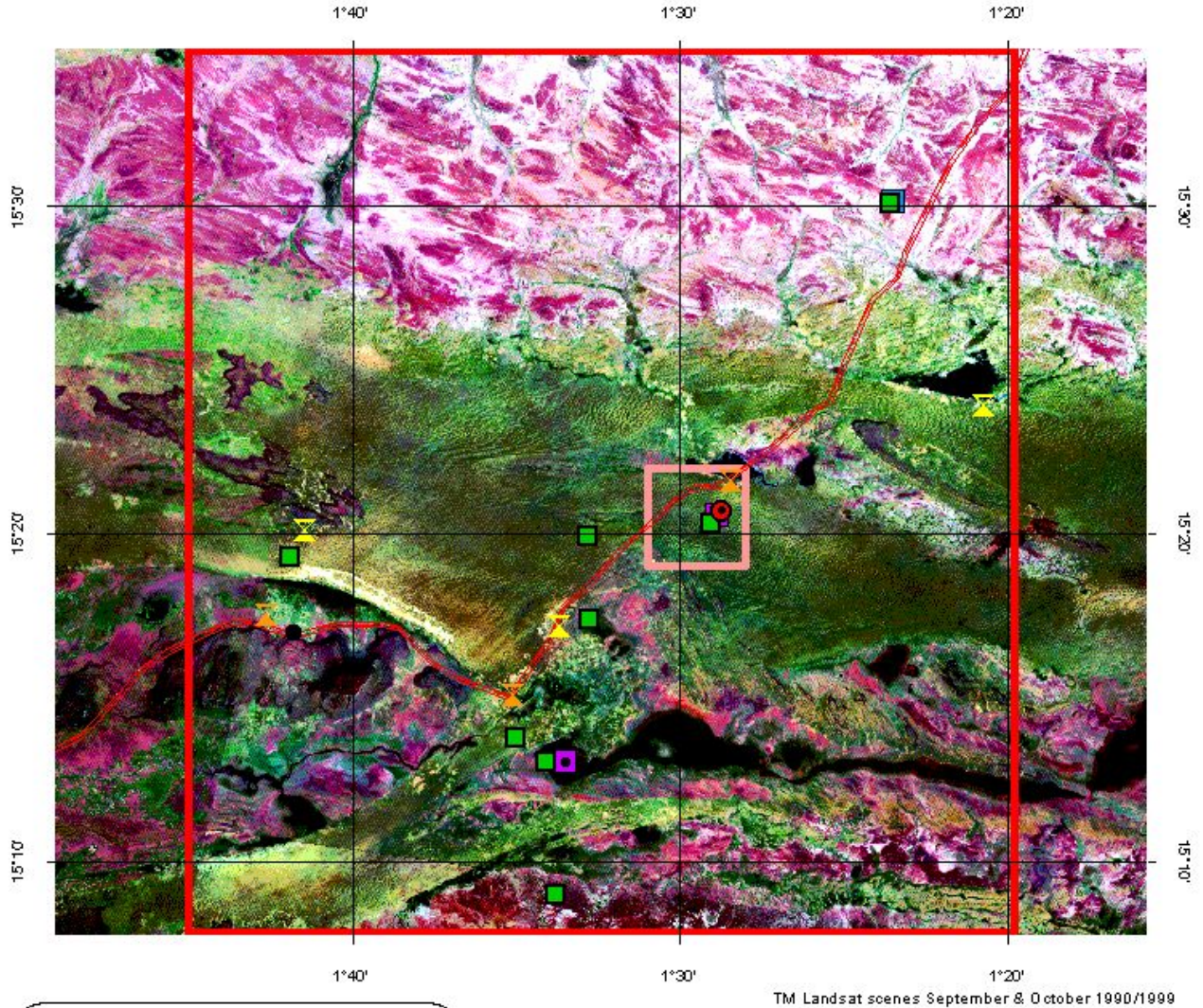
300 mm

350 mm

450 mm

Niger River

Hombori super site



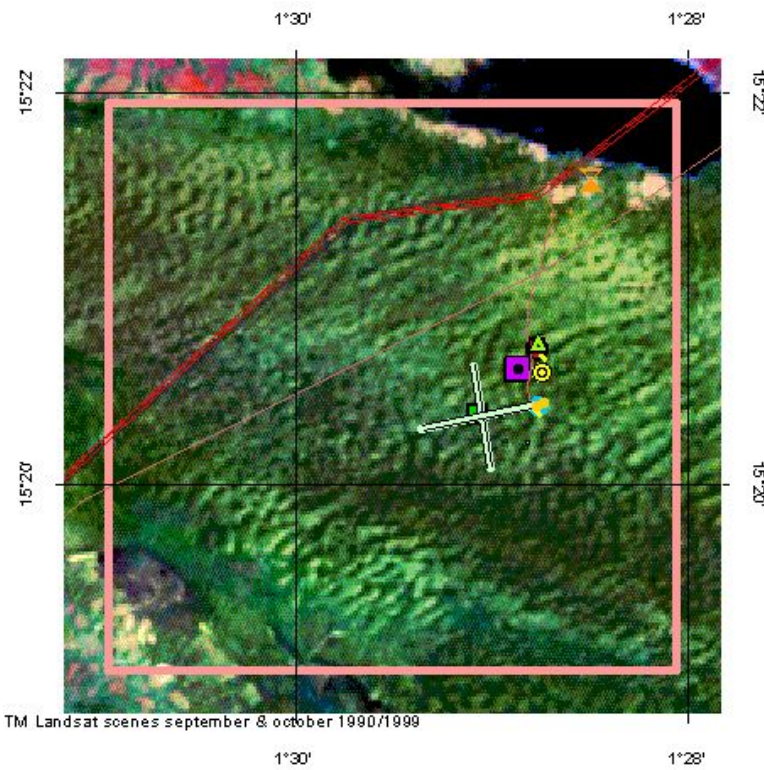
Legend

- Automatic raingauge
- Raingauge
- Automatic weather station
- Vegetation monitoring site
- CO₂ & H₂O flux station
- Heat flux station
- Tarmac roads
- Agoufou Intensive local site

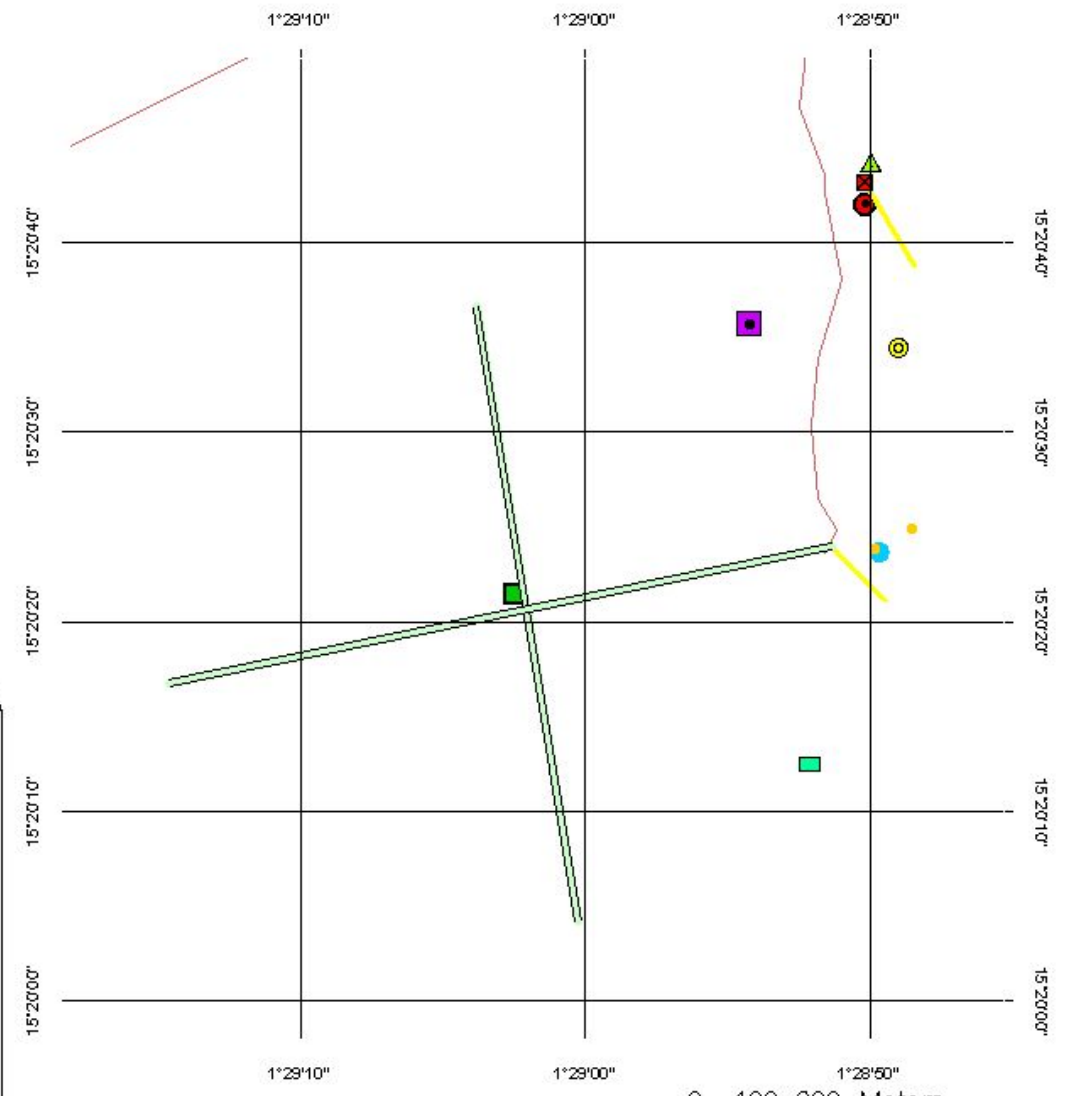


0 5 10 Kilometers

Instruments as per May 2005



Agoufou Intensive local site



Legend

Soil pit	Raingauge
Idaf station	soil moisture
Photometer	Dirt roads
Vegetation Transects	Tarmac roads
Up to Down slope transects	Automatic weather station
CO2 profile (balloon)	Vegetation monitoring site
Sapflow plot	CO2 & H2O flux station

Instruments as per May 2005



Appendix 2

List of TT3 instruments

List of TT3 instruments

Nomenclature:

Form #: XY# with X=L(*LOP*)/E(*EOP*)/S(*SOP*); Y=F(*French*)/E(*European*) instrument

Instrument code XY.name_G(d)(c): X=A(*Atmosphere*)/C(*Continent*)/O(*Ocean*); Y=L/E/S, idem form #; G(h)(a)=G(*Gourma site*)/(h)(*Hombori supersite*)/(a)(*Agoufou=local*)

Period	Form #	Code	PI Name	E-Mail Address	Instrument	Platform
EOP	EF6	AE.Ba.CO2_G	L. Kergoat (CESBIO)	laurent.kergoat@cesbio.cnes.fr	Tethered balloon for CO ₂ profiles in the nocturnal boundary layer	Agoufou
EOP	EF7	AE.Flux_G	F. Timouk (CESBIO)	franck.timouk@cesbio.cnes.fr	Network of 4 flux stations (2 HF and 2 CO ₂ /H ₂ O)	Gourma
EOP	EF14	CE.SW_G	P. de Rosnay (CESBIO)	patricia.derosnay@cesbio.cnes.fr	Network of 9 automatic stations for soil moisture measurements.	Gourma
EOP	EF15	CE.VegSoil_G	J. Seghieri (CESBIO)	josiane.seghieri@ird.fr	Network of 1 x 1 km ² vegetation sites, soil and vegetation chemical analyses, Ecophysiology measurements	Gourma
EOP	EF16	CE.PAR_Ga	V. Demarez (CESBIO)	valerie.demarez@cesbio.cnes.fr	Network of automatic PAR cells for grass and tree canopies	Agoufou
EOP	EF17	CE.Sap_Gh	V. Le Dantec (CESBIO)	valerie.ledantec@cesbio.cnes.fr	Automatic measurements of sap flow on trees.	Hombori
LOP	LF1	AL.Met_G	F. Timouk (CESBIO)	franck.timouk@cesbio.cnes.fr	2 automatic weather stations	Gourma
LOP	LF16	CL.Rain_G	F. Lavenu (CESBIO)	françois.lavenu@ird.fr	Network of 8 automatic raingauges	Gourma
LOP	LF26	CL.Depot_RW	C. Galy-Lacaux (LA)	lacc@aero.obs-mip.fr	1 IDAF station	Agoufou
LOP	-	CL.Photometer	P. Goloub (LOA)	goloub@loa630.univ-lille1.fr	PHOTON/AERONET Photometer	Agoufou

Instruments relevant to other Task Teams

Nomenclature:

Form #: XY# with X=L(*LOP*)/E(*EOP*)/S(*SOP*); Y=F(*French*)/E(*European*) instrument

Instrument code XY.name_G(d)(c): X=A(*Atmosphere*)/C(*Continent*)/O(*Ocean*) ; Y=L/E/S, idem form # ; G(h)(a)=G(*Gourma site*)/(h)(*Hombori supersite*)/(a)(*Agoufou=local*)

Period	Form #	Code	PI Name	E-Mail Address	Instrument	Platform
EOP	EF1	AE.GPS_1	M.N. Bouin (IGN) Olivier Bock (SA)	bouin@ensg.ign.fr bock@aero.jussieu.fr	GPS stations	Meridional transect: Gao - Tombouctou
EOP	EF30	AE.DUST_ST	Bernadette Chatenet	chatenet@lisa.univ-paris12.fr	PHOTON/AERONET Photometer	Sahelian Transect Cinzana
EOP	EE9	AE.Flux_G	C. Lloyd (CEH) C. Taylor (CEH)	crl@ceh.ac.uk taylor@ceh.ac.uk	Flux station network	Gourma
EOP	-	UHF_BMKO	B. Campistron	camb@aero.obs-mip.fr	UHF Bamako	Bamako

Appendix 3

List of TT3 members

Name	Surname	E-Mail Address	Affiliation	Country	Associated Instrument	Instrument / Position
Bà	Abdramane	abdramane@yahoo.fr	FAST	Mali	AERONET Sun photometer	CL.Photometer
Bennie	Jon	jj.bennie@durham.ac.uk	CEH	UK	Vegetation surveys	CLASSIC
Bock	Olivier	bock@aero.jussieu.fr	SA	France	GPS stations	AE.GPS_1, AS.GPS_1
Bouin	Marie-Noëlle	bouin@ensg.ign.fr	IGN/ENSG	France	GPS stations	AE.GPS_1, AS.GPS_1
Campistron	Bernard	camb@aero.obs-mip.fr	LA/UPS	France	UHF Bamako	TT1
Chatenet	Bernadette	chatenet@lisa.univ-paris12.fr	LISA	France	AERONET Sun Potometer	AE.DUST_ST
Damesin	Claire	claire.Damesin@.fr	ESE/Orsay	France	Licor gaz exchange devices	CE.VegSoil_G
Delon	Claire	claire.delon@aero.obs-mip.fr	LA/UPS	France	Soil NOx emissions	ECCO/PNBC
Demarez	Valérie	valerie.demarez@cesbio.cnes.fr	CESBIO	France	PAR cells	CE.PAR_Ga
De Rosnay	Patricia	patricia.derosnay@cesbio.cnes.fr	CESBIO	France	Soil moisture network	CE.SW_G
Diarra	Lassine	lassine.Diarra@ier.ml	IER	Mali	President Malian AMMA Committee, vegetation surveys	AMMA Mali
Diop	Babakrar		FAST	Mali	IDAF	CL.Depot_RW
Epron	Daniel	daniel.Epron@oo.fr	EEF/Nancy	France	Licor gaz exchange devices	CE.VegSoil_G
Dembélé	Fadiala	Crra.gao@ier.ml	IPR	Mali	Vegetation surveys	AMMA Mali
Famouké	Traoré	tfamouke@yahoo.fr	ENI	Mali	UHF Bamako	AMMA Mali
Fediere	Gilles	Gilles.fediere@ird.fr	IRD	Mali	Head IRD in Mali	Head IRD in Mali
Fofana	Al Mostapha	dnhe@afribonemali.net	DNH	Mali	Hydrology	AMMA Mali
Frison	Pierre-Louis	frison@umvl.fr	UMVL	France	Satellite validation	Satellite validation
Galy-Lacaux	Corinne	lacc@aero.obs-mip.fr	C. Galy-Lacaux	France	IDAF station	CL.Depot_RW
Guichard	Françoise	francoise.guichard@meteo.fr	CNRM	France	Tethered balloon	AE.Ba.CO2_G
Goloub	Philippe	goloub@loa630.univ-lille1.fr	Uni-Lille/LOA	France	Sun Photometer	CL.Photometer
D'Herbes	Jean-Marc	dherbes@mpl.ird.fr	IRD/Montpellier	France	Vegetation studies	ROSELT
Hiernaux	Pierre	hiernaux@cesbio.cnes.fr	CESBIO	France	Vegetation studies	CE.VegSoil_G
Karambé	Moussa	moussa.karambe@ird.fr	FAST	Mali	Vegetation studies	AMMA Mali
Kergoat	Laurent	laurent.kergoat@cesbio.cnes.fr	CESBIO	France	Tethered balloon	AE.Ba.CO2_G
Koité	Mohamed	dnm@afribone.net.ml	DNM	Mali	Rainfall network	AMMA Mali
Lavenu	François	françois.Lavenu@ird.fr	CESBIO	Mali	Raingauge network , AERONET	CL.Rain_G,CL.Photometer

Le Dantec	Valérie	valerie.ledantec@cesbio.cnes.fr	CESBIO	France	Sap flow stations	CE.Sap_Gh
Lloyd	Colin	crl@ceh.ac.uk	CEH	UK	Flux station network	AE.Flux_G
Mazzega	Pierre	pierre.mazzega@cnes.fr	LEGOS	France	Remote sensing studies	TOSCA
Mercado	Lina	lmme@ceh.ac.uk	CEH	UK	Vegetation surveys	CLASSIC
Mougenot	Bernard	mougenot@cesbio.cnes.fr	CESBIO	France	Soil characterization	CE.VegSoil_G
Mougin	Eric	mougin@cesbio.cnes.fr	CESBIO	France	Vegetation studies	TT Leader, CE.VegSoil_G, CE.SW_Gh, CE.PAR_Ga
Saïd	Frédérique	saif@aero.obs-mip.fr	LA/UPS	France	UHF Bamako	TT1
Seghieri	Josiane	seghieri@ird.fr	CESBIO	Mali	Vegetation studies	CE.VegSoil._G
Serça	Dominique	serd@aero.obs-mip.fr	CNRS/LA	France	Soil NOx emissions	ECCO/PNBC
Sissoko	Mamadou	malirep@asecna.org	ASECNA	Mali	UHF Bamako	AMMA Mali
Soumaré	Aly	Crra.gao@ier.ml	IER	Mali	Vegetation surveys	AMMA Mali
Taylor	Chris	chris.taylor@ceh.ac.uk	CEH	UK	Network of flux stations	AE.Flux_G, TT2
Timouk	Franck	franck.timouk@cesbio.cnes.fr	CESBIO	France	Automatic weather stations, flux stations	AL.Met_G, AE.Flux_G